



REXDALE PARC

(Albion Heights JMS – Elmbank JMA – Greenholme JMS
– Humberwood Downs JMA – Melody Village JS)

General Data

Strategy and Planning Department



Definitions

Head count Enrolment - Number of students in a school

Ministry Capacity - number of student places available within the school

Utilization - how the school is being used. Headcount divided by Ministry Capacity

Site Size - the size of the property

Facility Size - the footprint of the school building

Full Day Kindergarten - full day kindergarten for 4 & 5 year olds

Attendance Area - is a school boundary. Each school has as a defined attendance area that determines which school a student will attend

Official Plan - a long term plan that manages the growth and development of a municipality

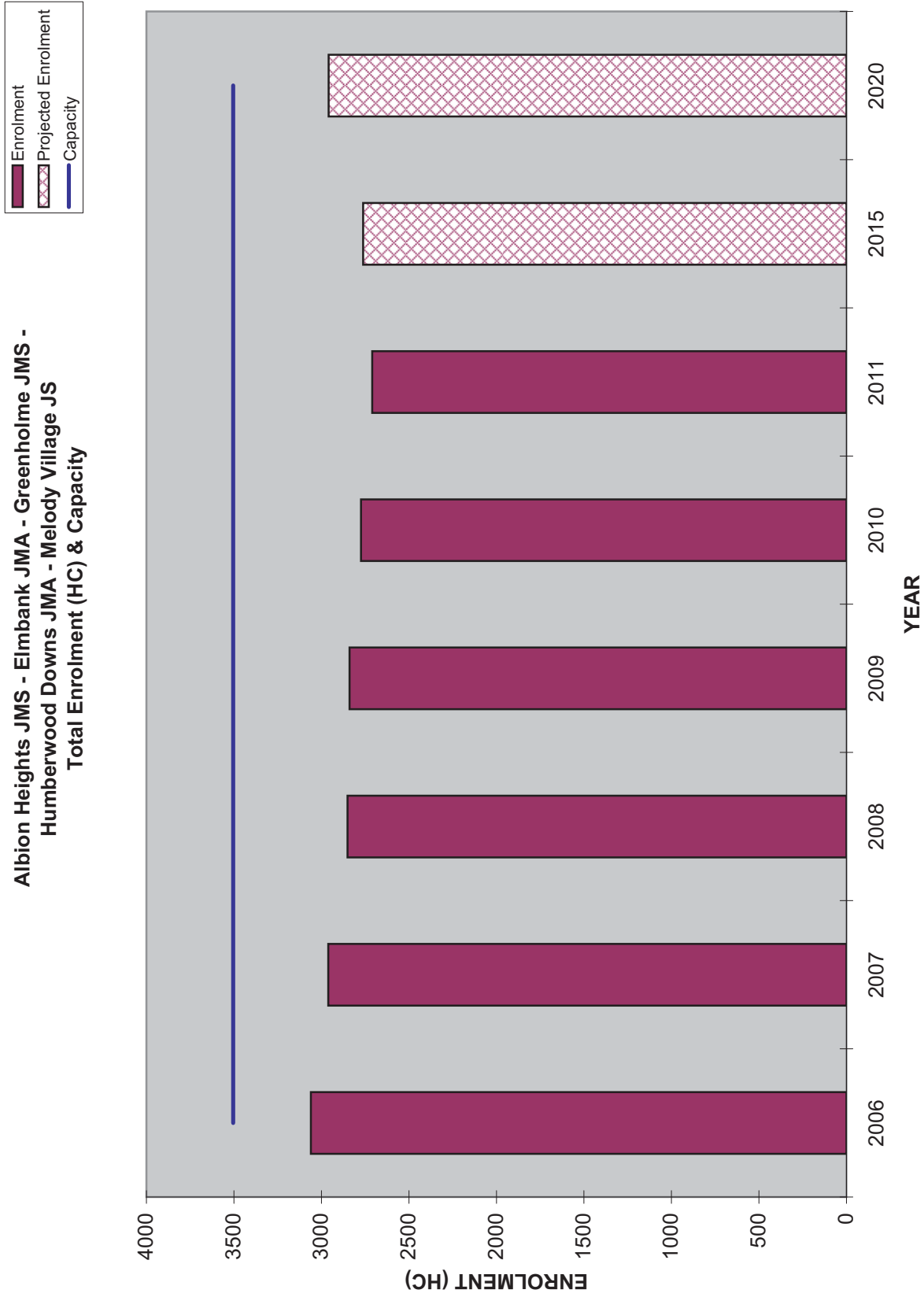


**Albion Heights JMS - Elmbank JMA - Greenholme JMS - Humberwood Downs JMA - Melody Village JS
Pupil Accommodation Review:**

Site Details	Albion Heights JMS	Elmbank JMA	Greenholme JMS	Humberwood Downs JMA	Melody Village JS
Grades Served	JK - 8	JK - 8	JK - 8	JK - 8	JK - 5
Year Built	1971	1967	1966	1997	1971
Site Size Acres	6	9.6	11.1	11.5	6
Facility Size Sq Ft	56,683	98,921	73,529	118,000	60,246
Ministry Capacity	507	766	712	1075	444
Portables on Site 2011/12	0	0	0	0	0
Headcount Enrolment Sept 2011	349	529	498	1026	308
Utilization Sept 2011 - HC	69%	69%	70%	95%	69%
Full Day Kindergarten Implementation	Phase 1 - 2010	Phase 1 - 2010	Phase 1 - 2010	Phase 5 - 2014	Phase 5 - 2014

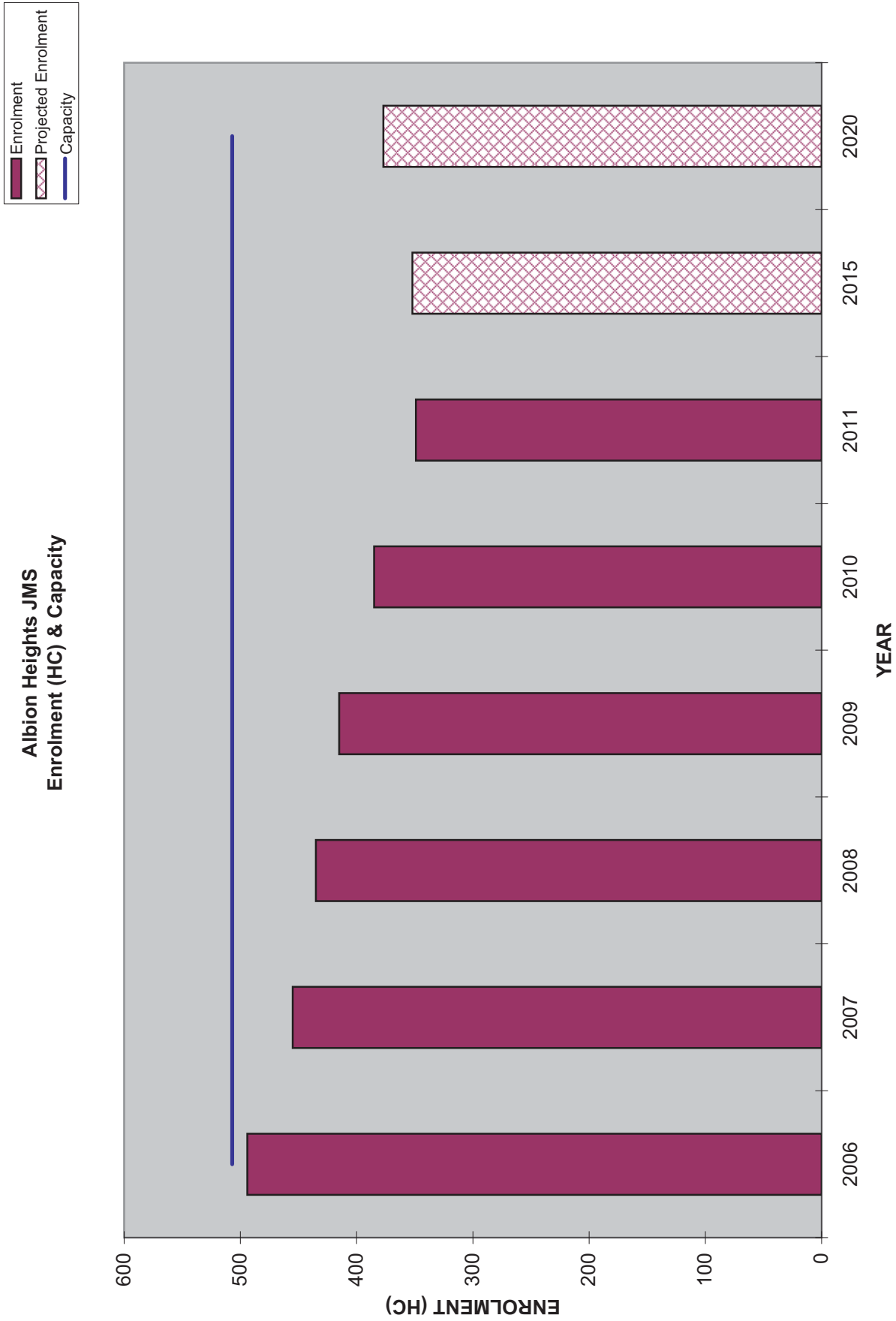
Total Schools

Albion Heights JMS - Elmbank JMA - Greenholme JMS -
 Humberwood Downs JMA - Melody Village JS
 Total Enrolment (HC) & Capacity

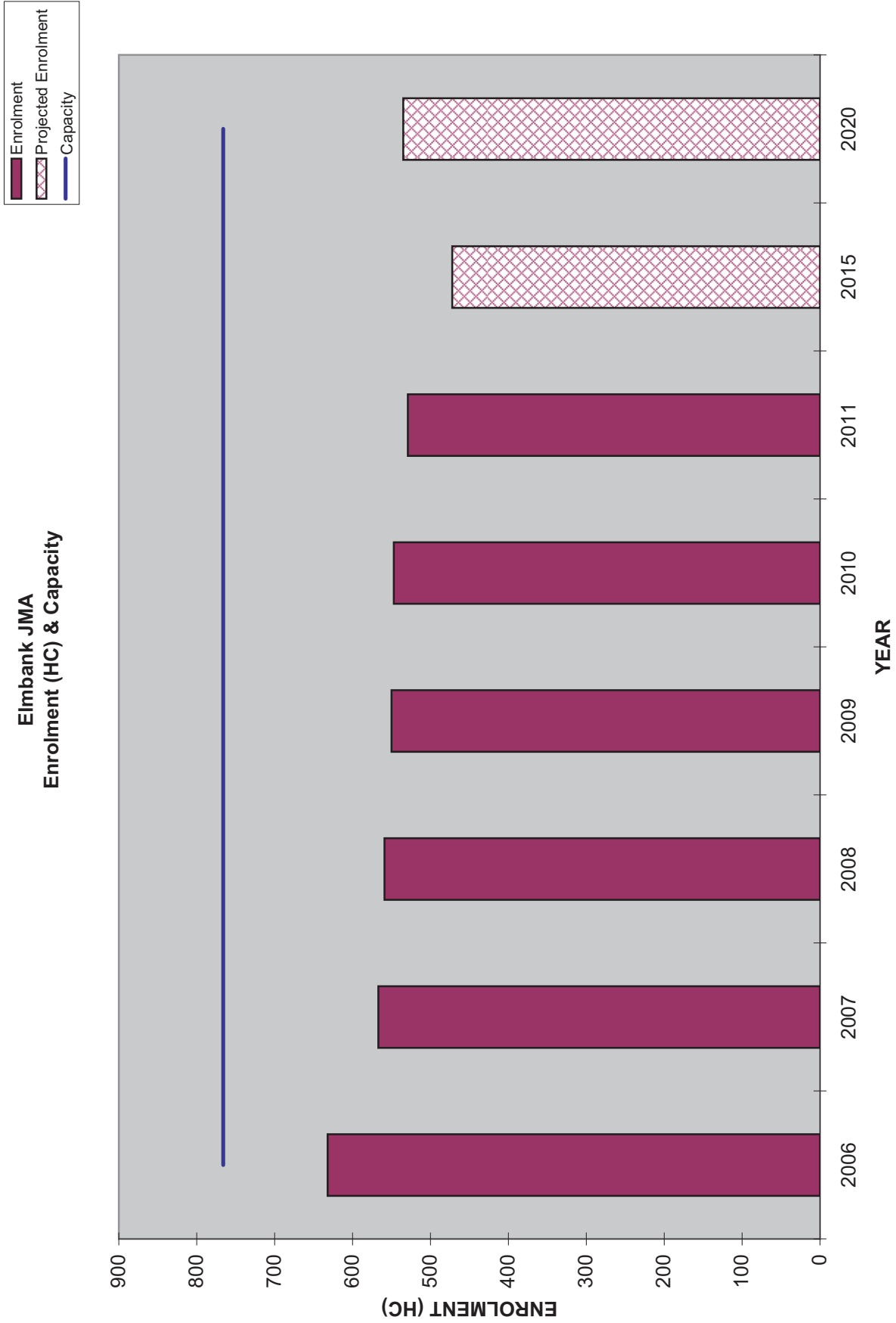


Albion Heights

Albion Heights JMS
Enrolment (HC) & Capacity

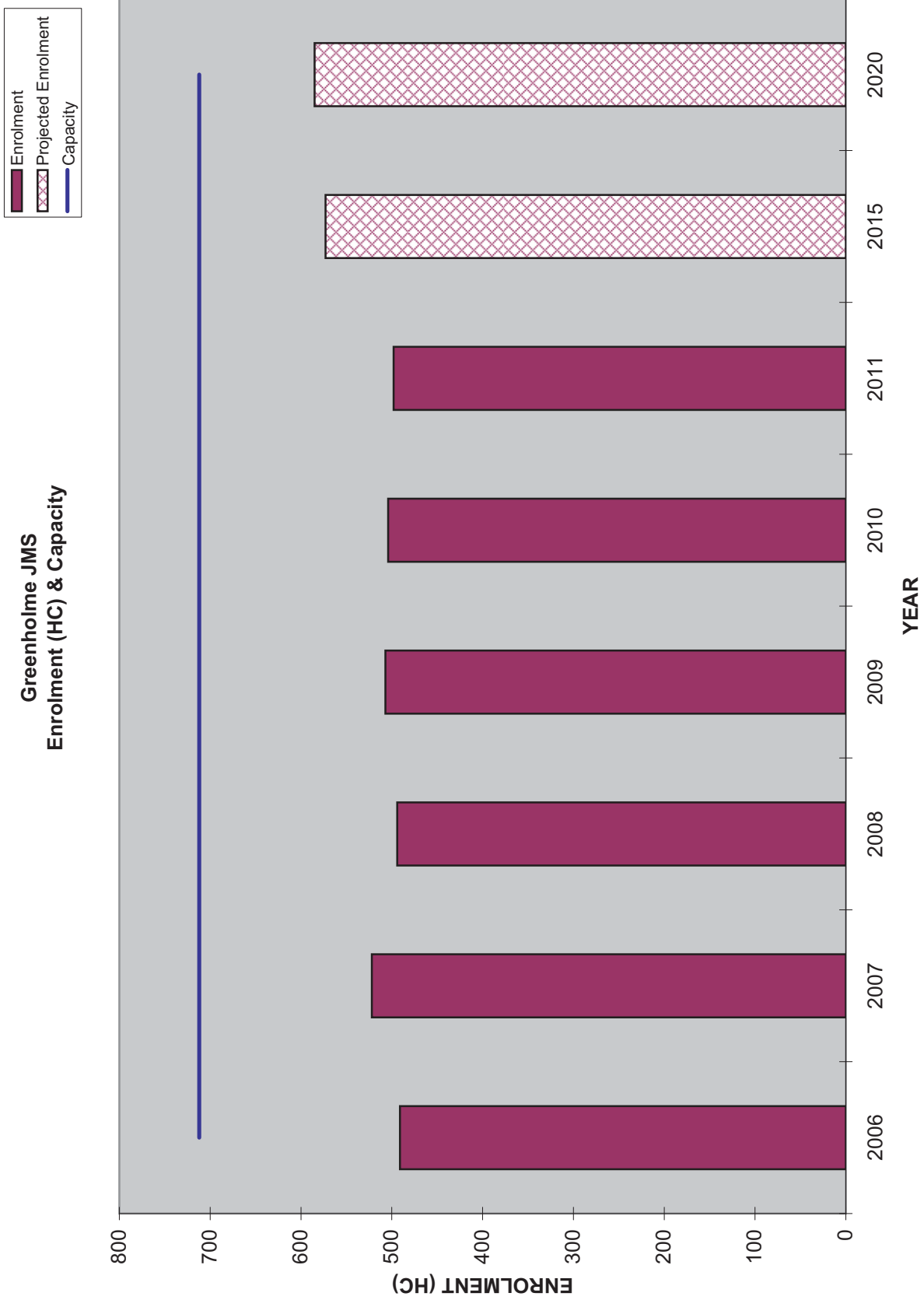


**Elmbank JMA
Enrolment (HC) & Capacity**



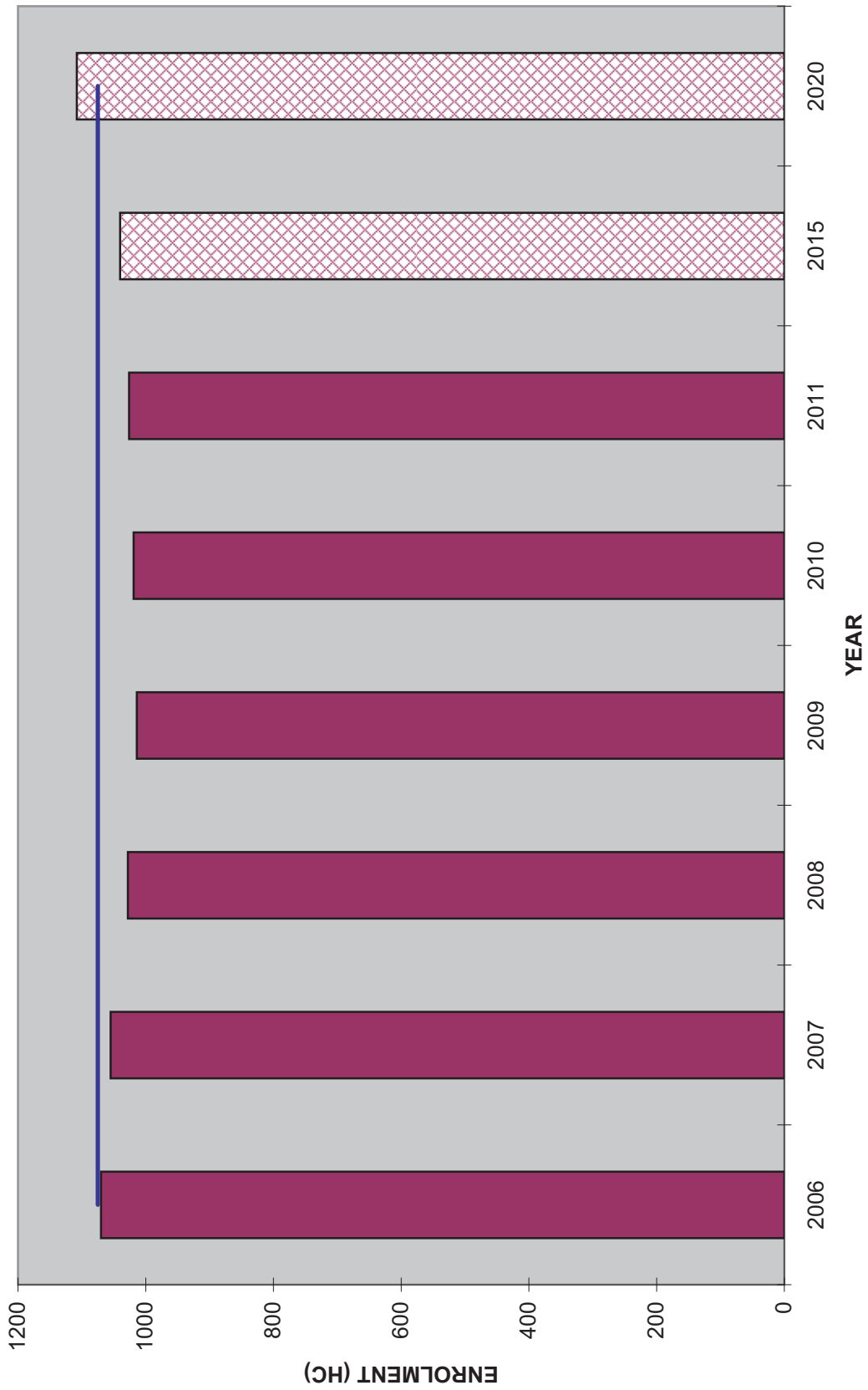
Greenholme

**Greenholme JMS
Enrolment (HC) & Capacity**



Humberwood Downs

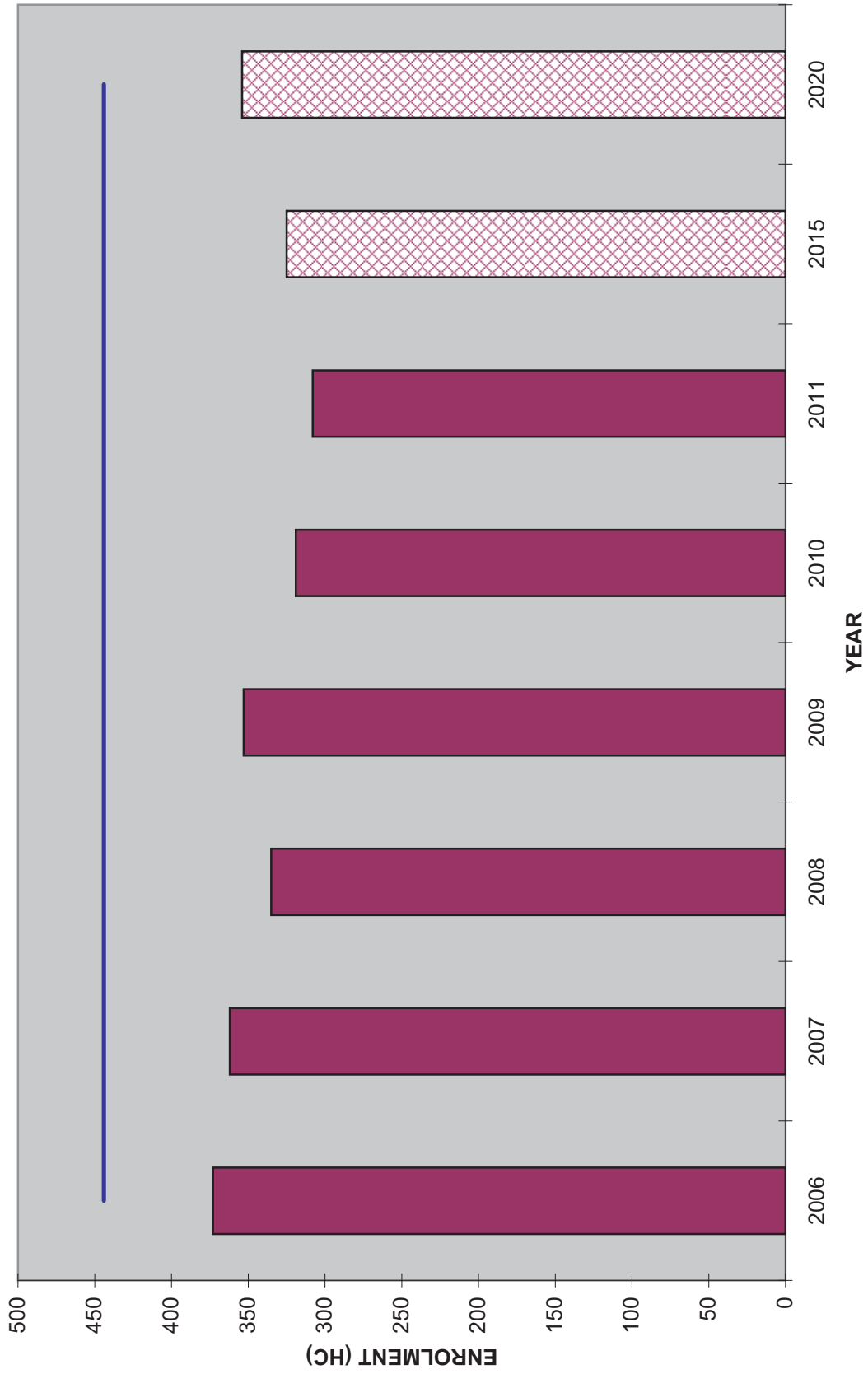
Humberwood Downs JMA
Enrolment (HC) & Capacity



Melody Village

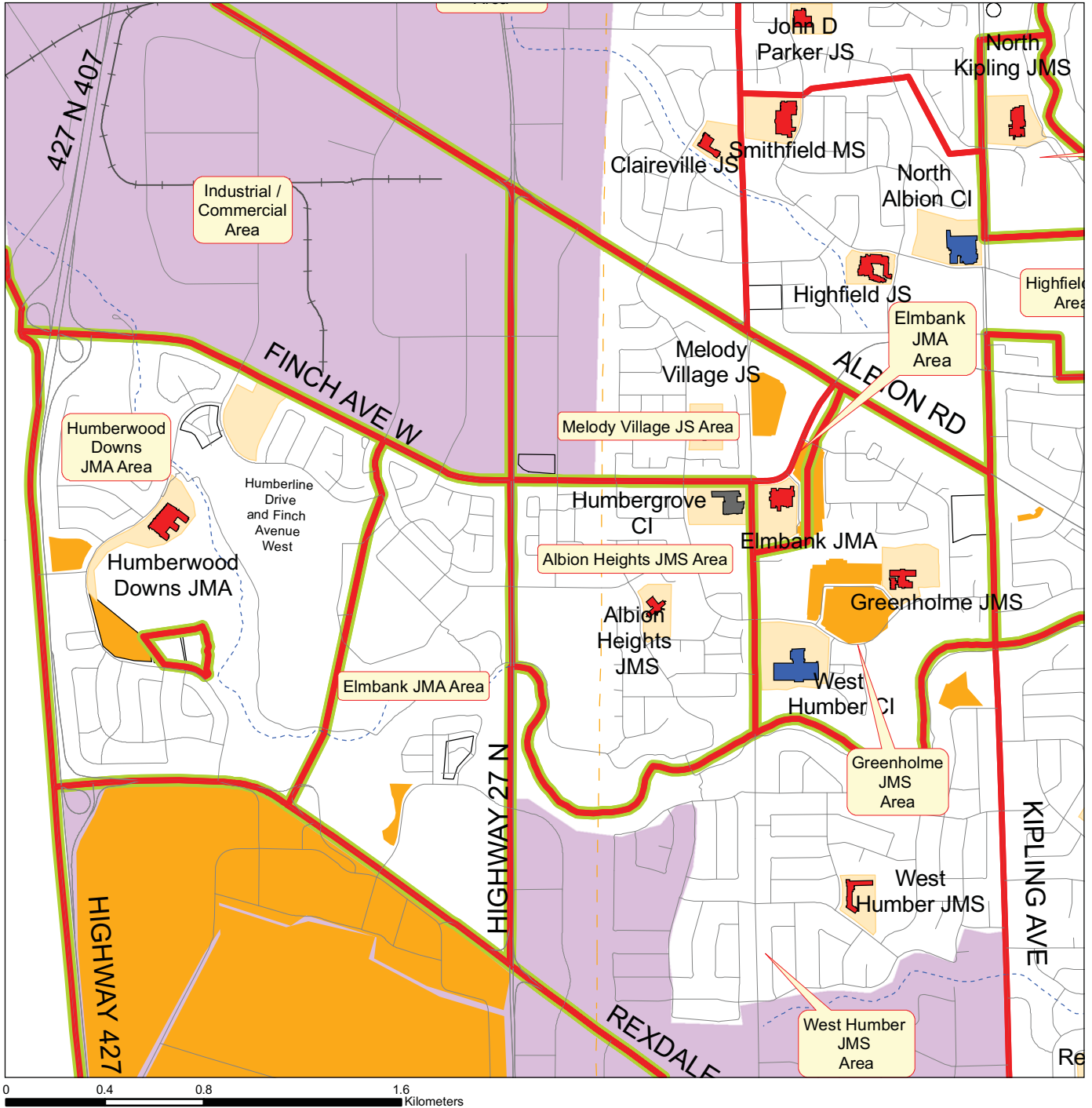


Melody Village JS
Enrollment (HC) & Capacity





Albion Heights JMS, Elmbank JMA, Greenholme JMS,
 Humberwood Downs JMA, Melody Village JS
 Junior and Intermediate Attendance Area & Development Activity



Produced by:
 Planning Division, TDSB
 September 2011
 Source:
 Base Map- Geospatial Competency Centre
 Facility - Planning Division, TDSB
 Data- City of Toronto



Legend:

- Elementary School
- Secondary School
- Other TDSB Facility
- Site

- Major Road
- Railway
- Utilityline
- Waterway
- Junior Attendance Area

Development Application

- Under Review
- Under Construction
- Built

Official Plan Area

- OP Avenues
- OP Centres
- OP Employment District
- OP Waterfront Downtown

L:/GISData/project/property needs review
 June 2011/Property Needs Review.mxd

Development Activity

Occupancy Status	Address of Development	Elementary School	Middle School	Number of Units	Type	Pupil Yields (projected JK-8)
2014	720 Humberwood Boulevard	Humberwood Downs*	Humberwood Downs*	69	Semi-Detached	27
2015	840 Queens Plate Drive	Elimbank JMS	Elimbank JMS	126	Seniors Building	1
2014/15	755 Humberwood Boulevard	Humberwood Downs*	Humberwood Downs*	44	Semi-Detached/ Single Family	16
2015/16	555 Rexdale Boulevard	TBD	TBD	2,500	Mix	635
Part of the Toronto Community Housing Corporation (Future Revitalization Plan)	Thisletown Revitalization	Elimbank JMS Greenholme JMS Melody Village JS	Elimbank JMS Greenholme JMS	2,125 (549 existing units)	Replacement, New Rental, and Market Value	150

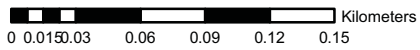
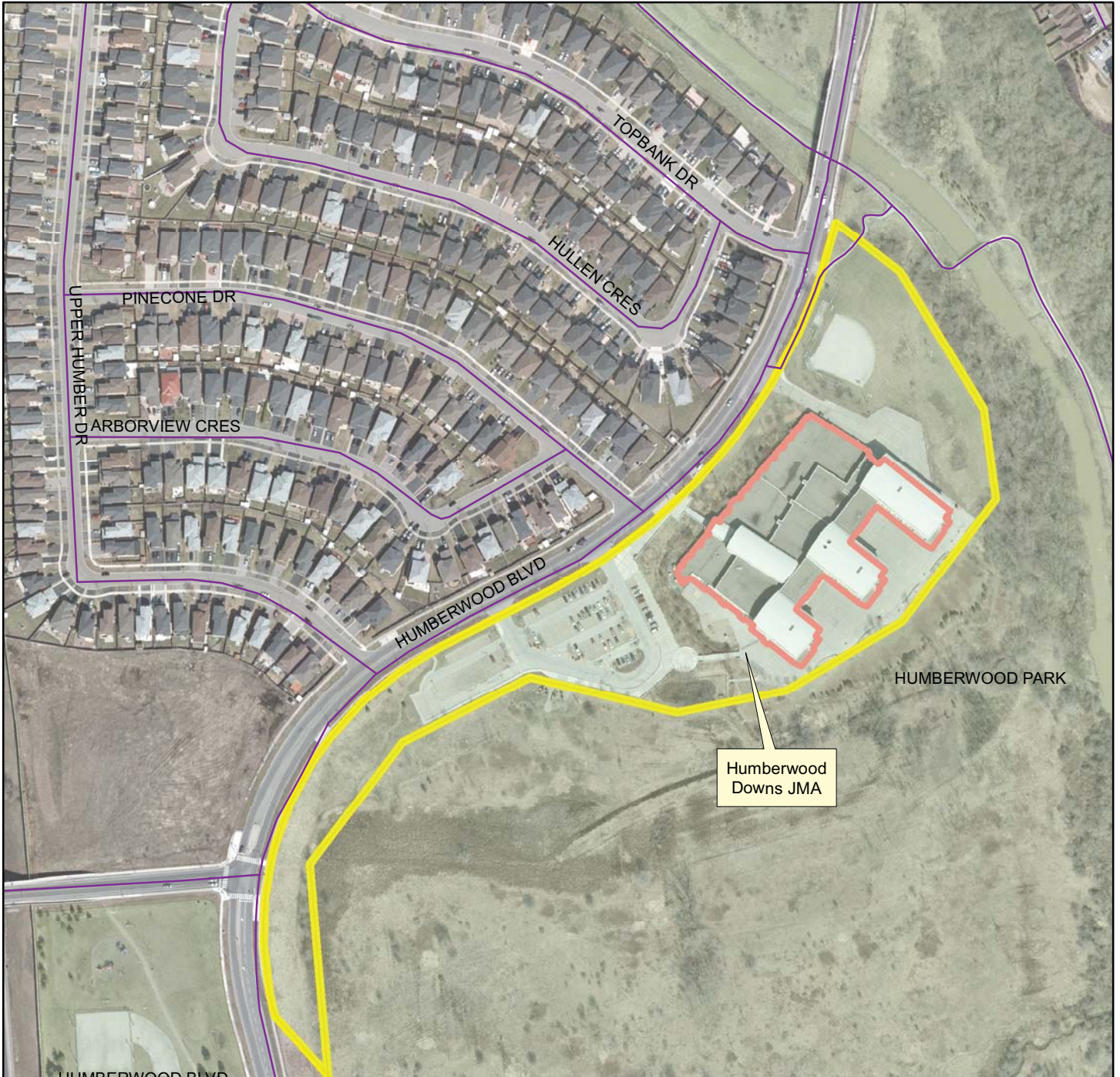
*They City of Toronto has been notified that there is insufficient space at the local elementary school to accommodate students anticipated from the proposed development. The Board has requested the following as a condition of approval:

That the applicant/ developer enter into an agreement to erect and maintain signs, at points of egress and ingress of the development site, advising that:

"The Toronto District School Board makes every effort to accommodate students at local schools. However, due to residential growth, sufficient accommodation may not be available for all students. Student may be accommodated in schools outside this area until space in local schools becomes available."



Humberwood Downs JMA 850 Humberwood Boulevard 2009



Produced by:
Planning Division, TDSB
November 2011

Source:
Base Map- Geospatial Competency Centre
Facility - Planning Division, TDSB
Data- City of Toronto



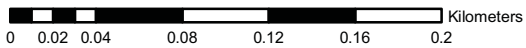
Legend

- Site
- Road
- TDSB Facility



Greenholme JMS

10 Jamestown Crescent
2009



Produced by:
Planning Division, TDSB
November 2011

Source:
Base Map- Geospatial Competency Centre
Facility - Planning Division, TDSB
Data- City of Toronto

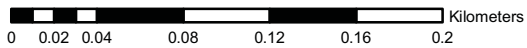
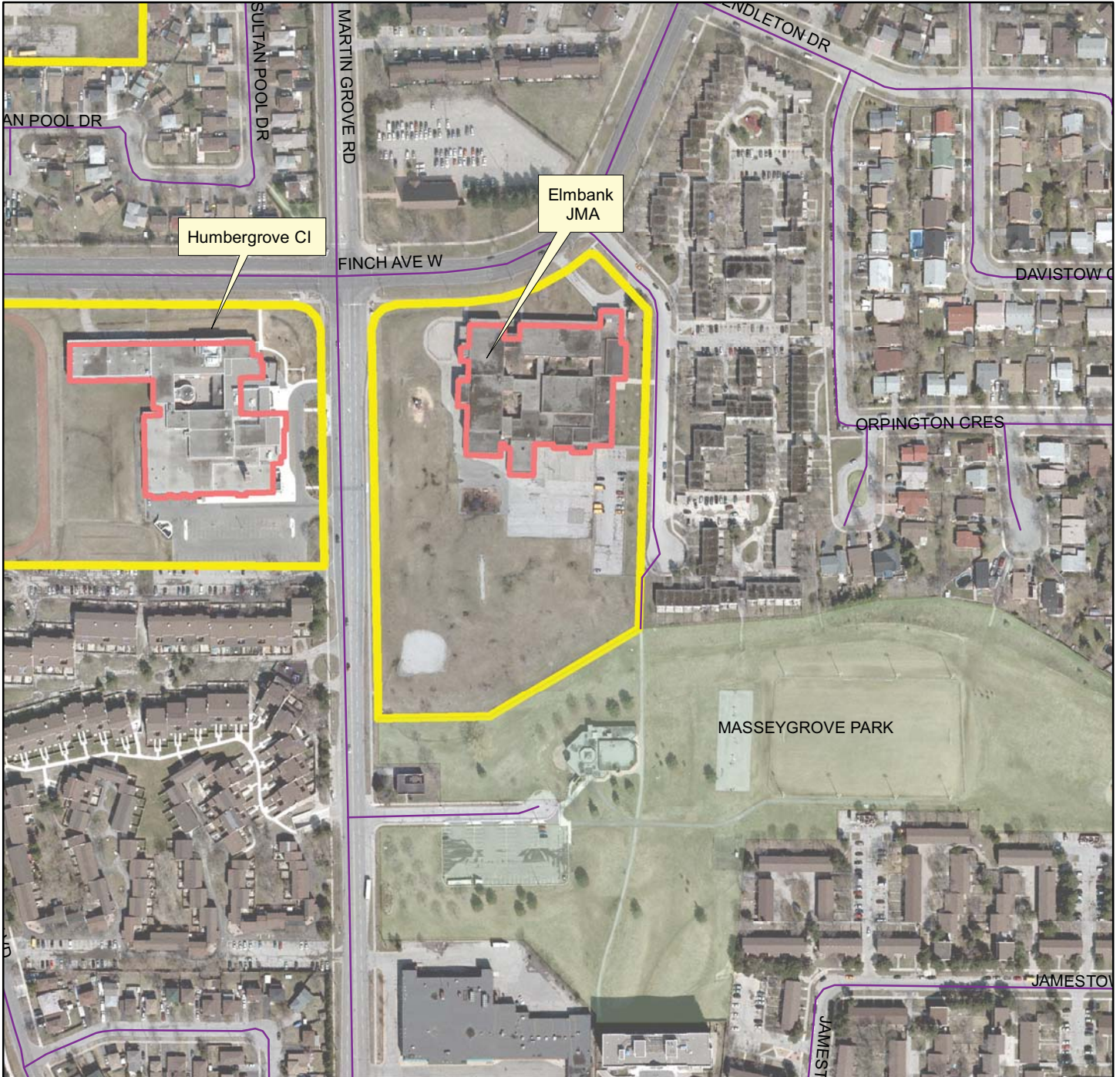


Legend

- Site
- TDSB Facility
- Road



Elmbank JMA
10 Pittsboro Drive
2009



Produced by:
Planning Division, TDSB
November 2011

Source:
Base Map- Geospatial Competency Centre
Facility - Planning Division, TDSB
Data- City of Toronto

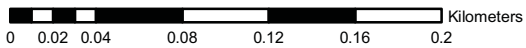
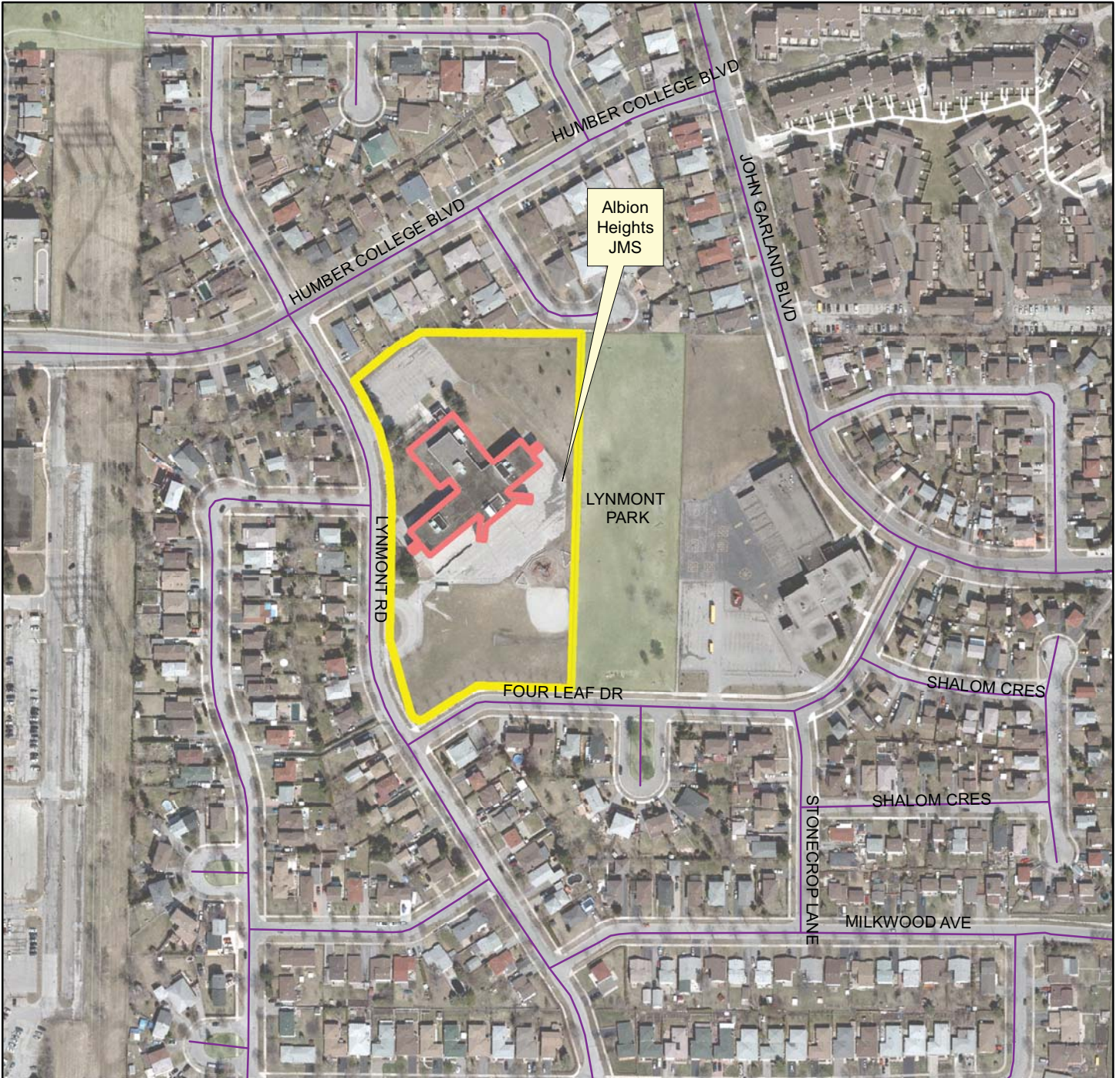


Legend

- Site
- TDSB Facility
- Road



Albion Heights JMS
 45 Lynmont Road
 2009



Produced by:
 Planning Division, TDSB
 November 2011

Source:
 Base Map- Geospatial Competency Centre
 Facility - Planning Division, TDSB
 Data- City of Toronto



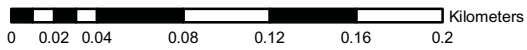
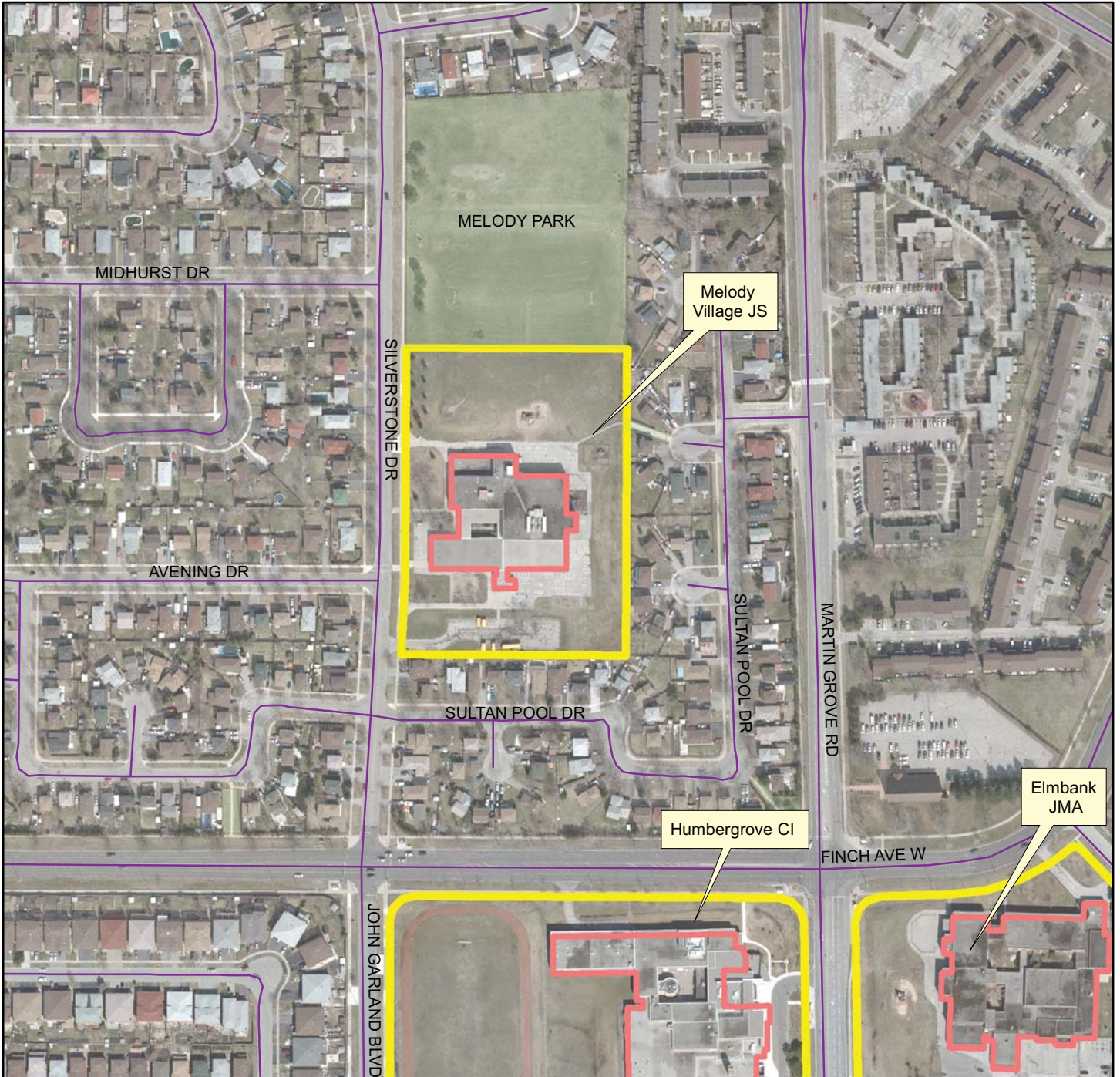
Legend

- Site
- TDSB Facility
- Road



Melody Village JS

520 Silverstone Drive
2009



Produced by:
Planning Division, TDSB
November 2011

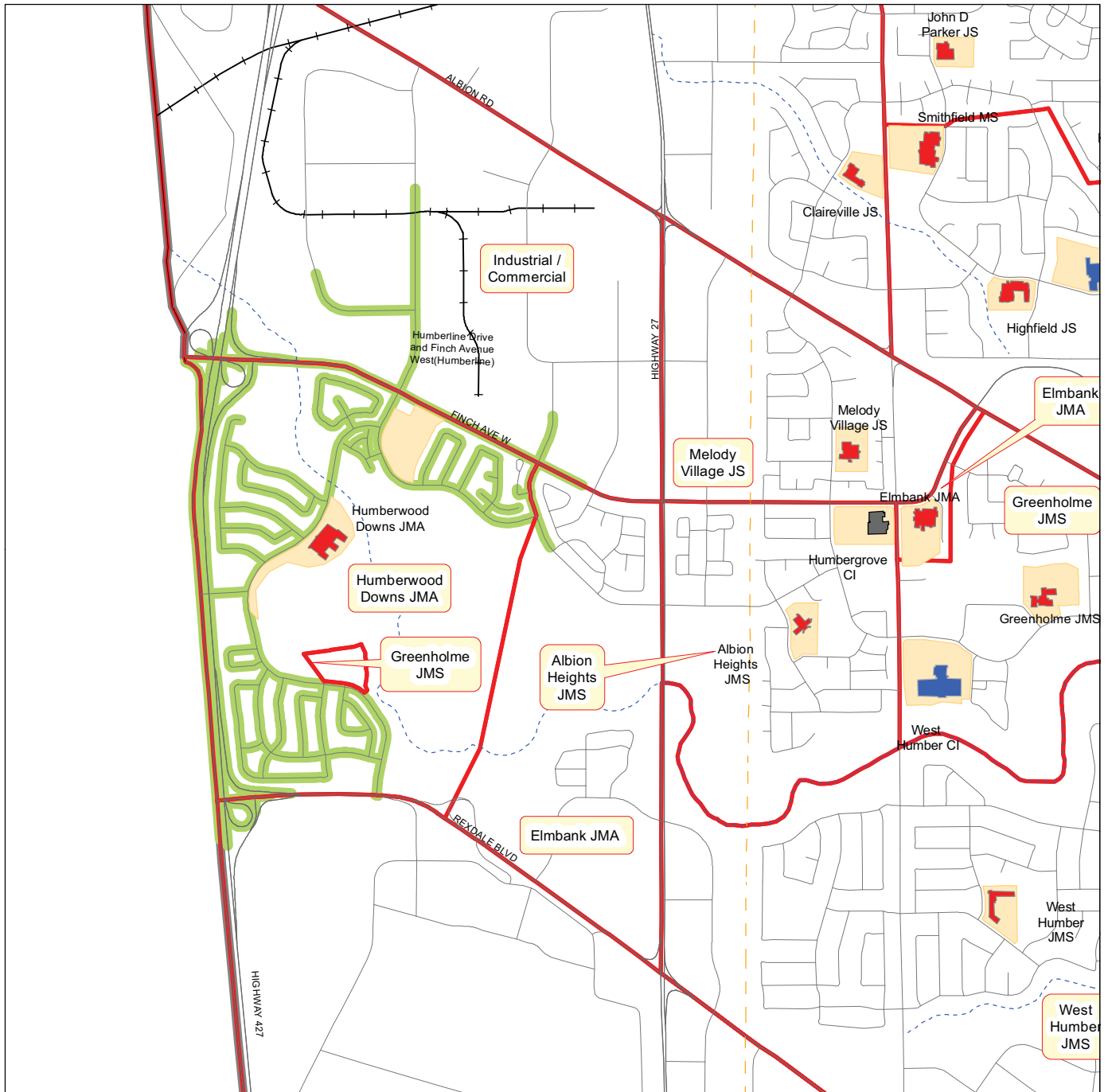
Source:
Base Map- Geospatial Competency Centre
Facility - Planning Division, TDSB
Data- City of Toronto



Legend

- Site
- TDSB Facility
- Road

1.6 km Walking Distance from Humberwood Downs JMS and Junior Attendance Area



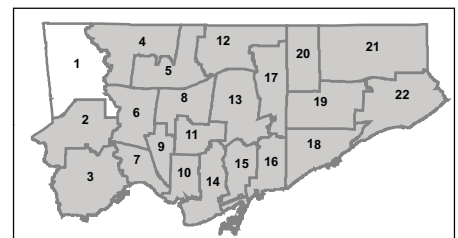
Produced by:
 Planning Division, Facility Services, TDSB
 March, 2008
 Source:
 Base Map - Land Information Toronto
 Facility Data - Facility Services, TDSB



F:GIS Data/Walking Distance/Ward and Junior Attendance

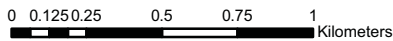
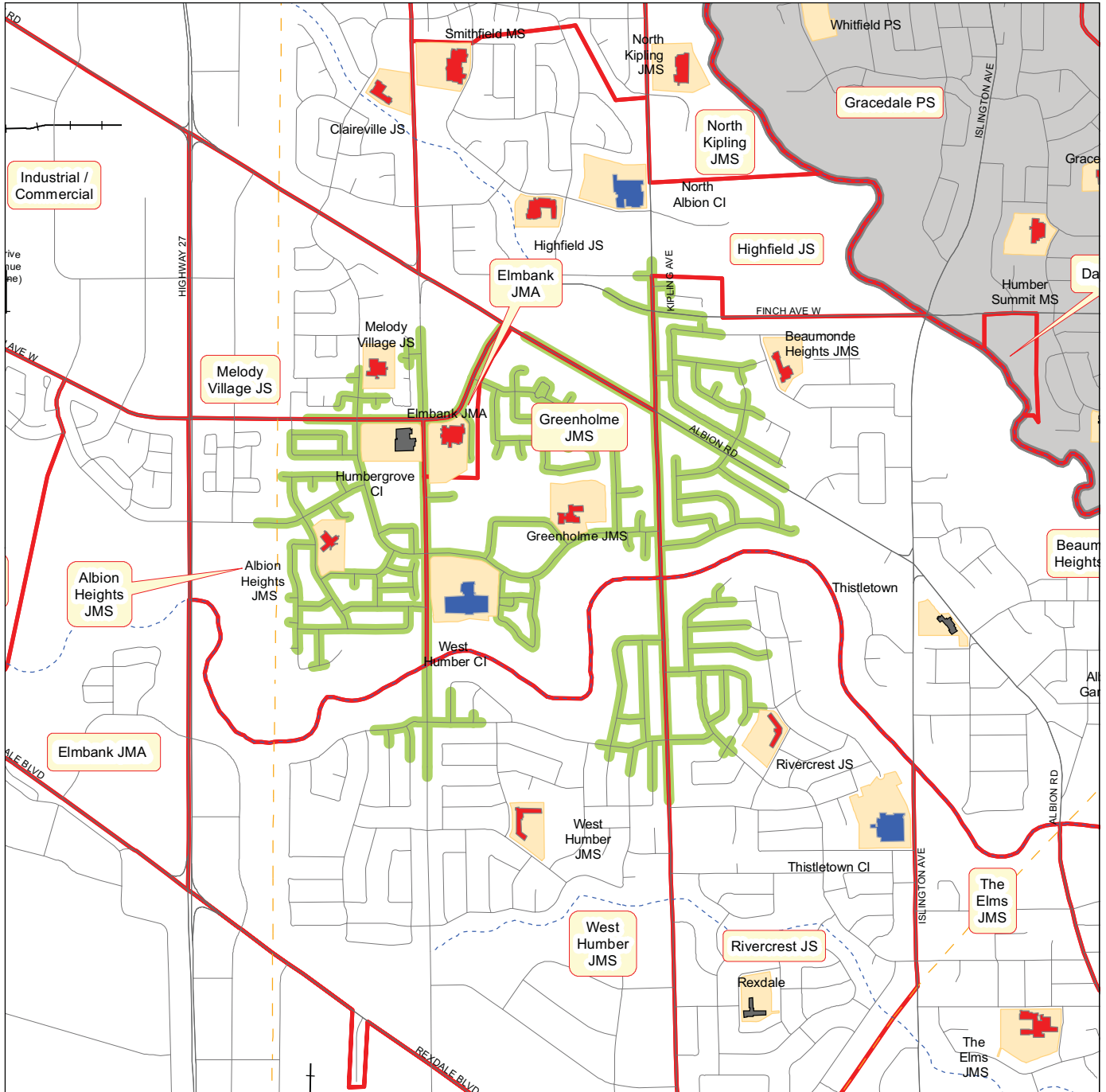
Legend:

- Elementary School
- Secondary School
- Other TDSB Facility
- Site
- 1.6 km Walking Distance
- Major Road
- Railway
- Utilityline
- Waterway
- Ward Boundary
- Junior Attendance Area



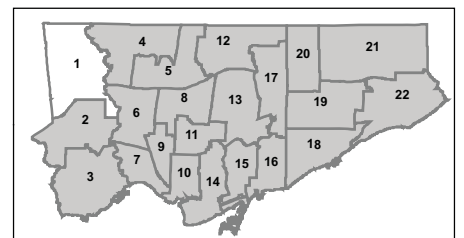


1.6 km Walking Distance from Greenholme JMS and Junior Attendance Area



Legend:

- Elementary School
- Secondary School
- Other TDSB Facility
- Site
- 1.6 km Walking Distance
- Major Road
- Railway
- Utilityline
- Waterway
- Ward Boundary
- Junior Attendance Area



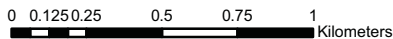
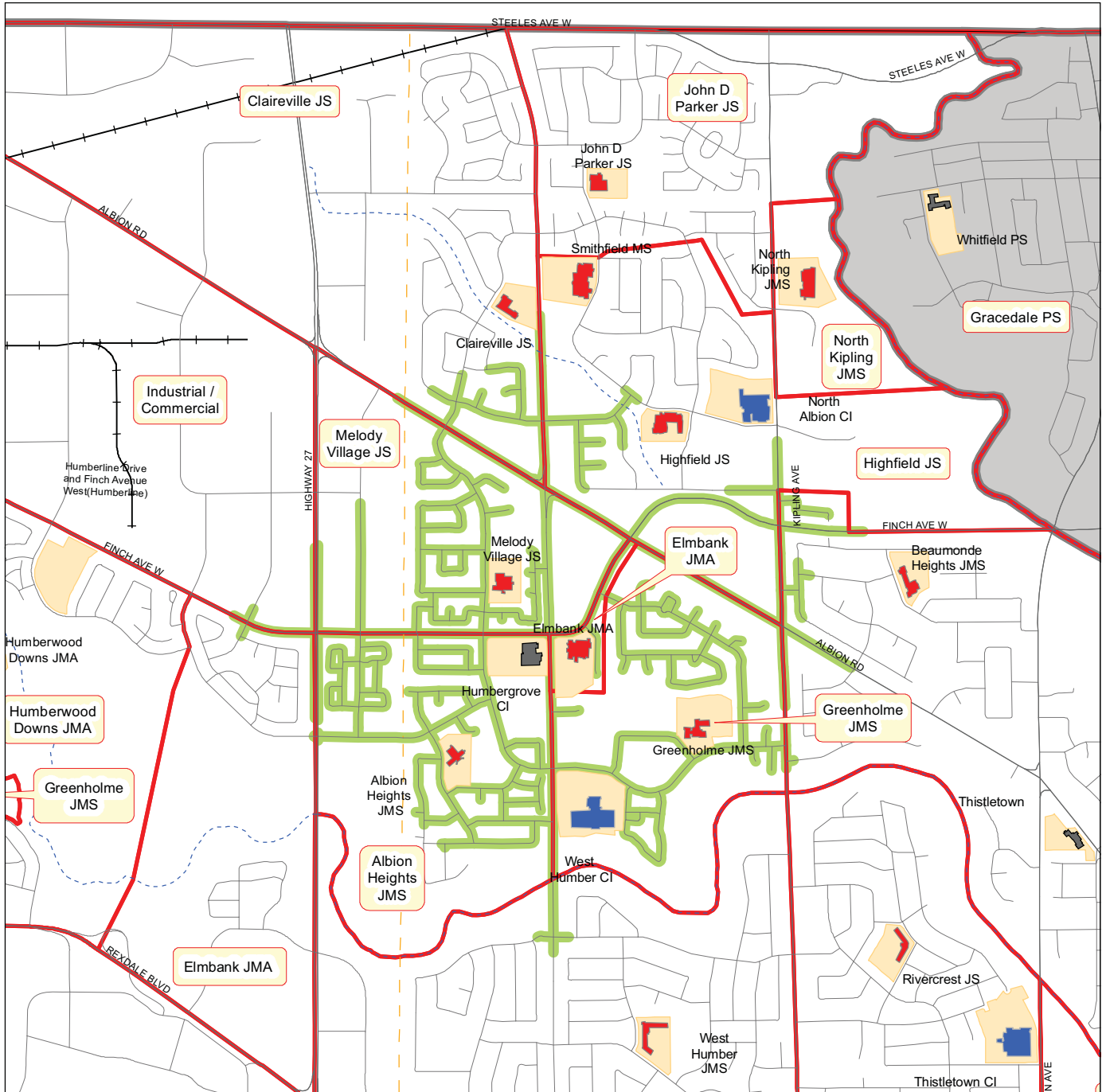
Produced by:
 Planning Division, Facility Services, TDSB
 March, 2008
 Source:
 Base Map - Land Information Toronto
 Facility Data - Facility Services, TDSB



F:\GIS Data\Walking Distance\Ward and Junior Attendance



1.6 km Walking Distance from Elmbank JMA and Junior Attendance Area



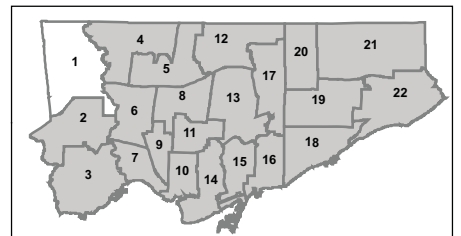
Legend:

- Elementary School
- Secondary School
- Other TDSB Facility
- Site
- 1.6 km Walking Distance
- Major Road
- Railway
- Utilityline
- Waterway
- Ward Boundary
- Junior Attendance Area

Produced by:
 Planning Division, Facility Services, TDSB
 March, 2008
 Source:
 Base Map - Land Information Toronto
 Facility Data - Facility Services, TDSB

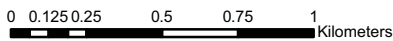
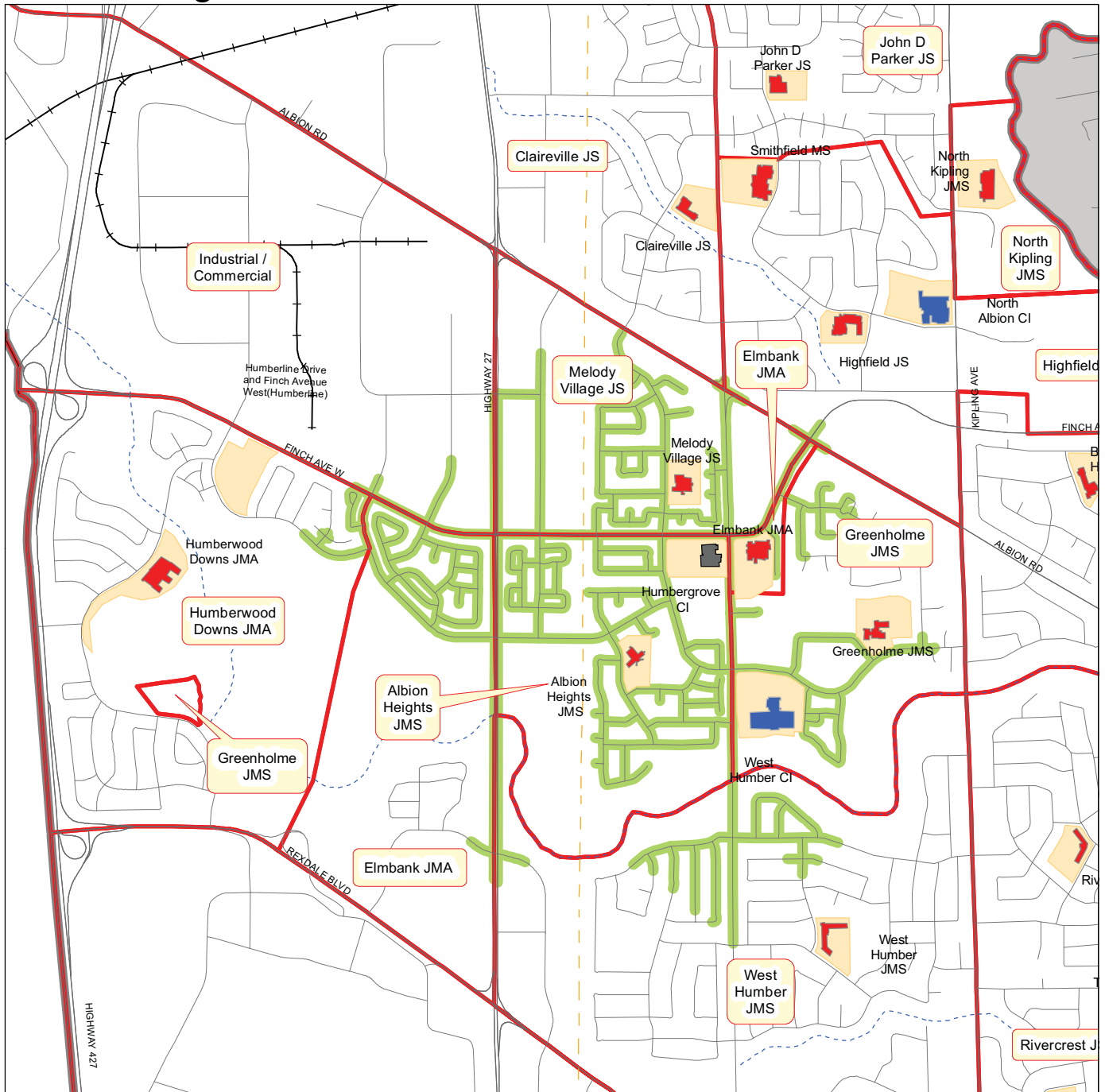


F:GIS Data/Walking Distance/Ward and Junior Attendance



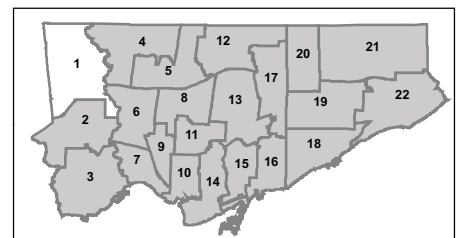


1.6 km Walking Distance from Albion Heights JMS and Junior Attendance Area



Legend:

- Elementary School
- Secondary School
- Other TDSB Facility
- Site
- 1.6 km Walking Distance
- Major Road
- Railway
- Utilityline
- Waterway
- Ward Boundary
- Junior Attendance Area



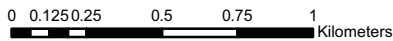
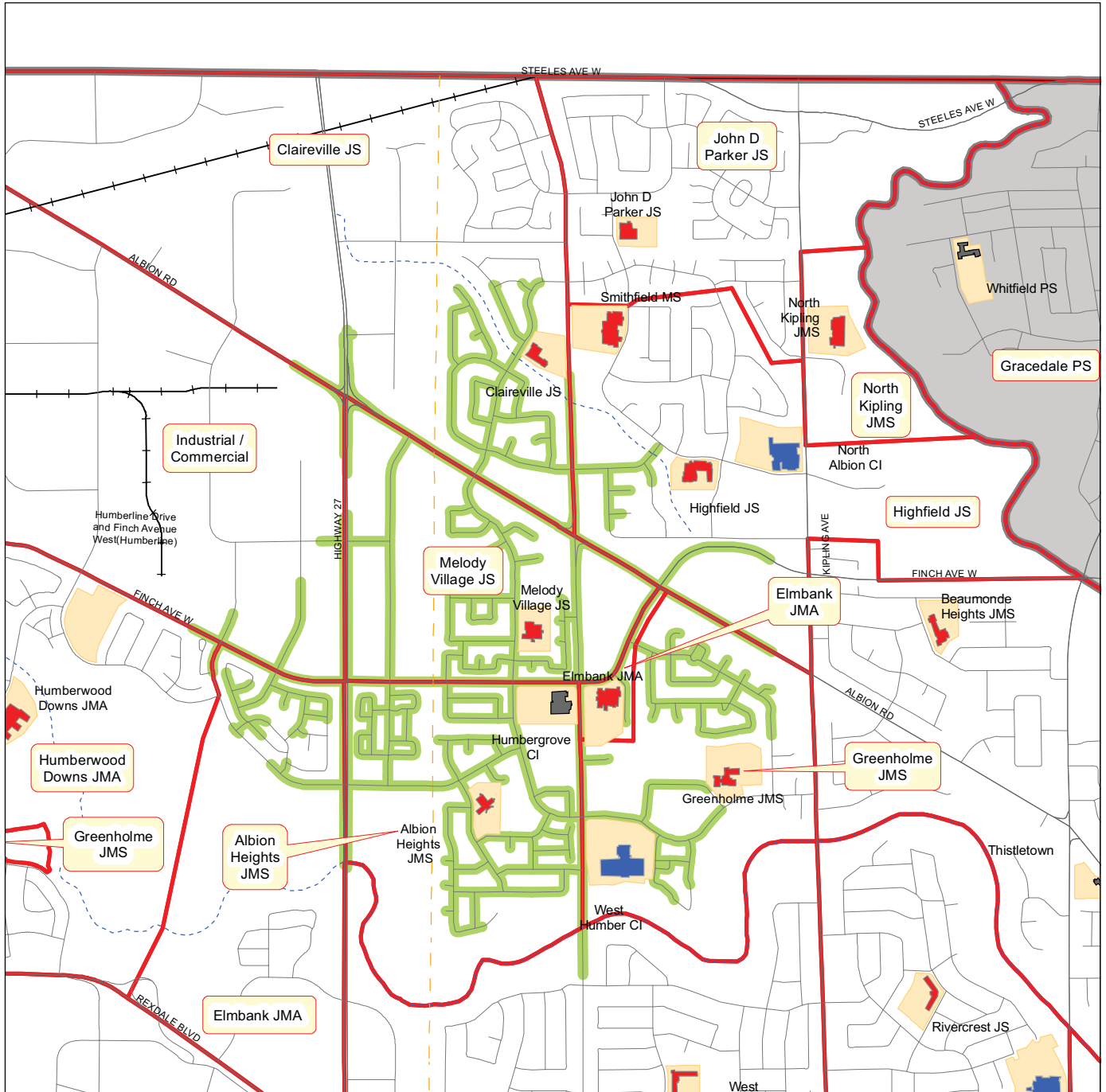
Produced by:
 Planning Division, Facility Services, TDSB
 March, 2008
 Source:
 Base Map - Land Information Toronto
 Facility Data - Facility Services, TDSB



F:GIS Data/Walking Distance/Ward and Junior Attendance



1.6 km Walking Distance from Melody Village JS and Junior Attendance Area



Produced by:
 Planning Division, Facility Services, TDSB
 March, 2008
 Source:
 Base Map - Land Information Toronto
 Facility Data - Facility Services, TDSB



F:GIS Data/Walking Distance/Ward and Junior Attendance

Legend:

- Elementary School
- Secondary School
- Other TDSB Facility
- Site
- 1.6 km Walking Distance
- Major Road
- Railway
- Utilityline
- Waterway
- Ward Boundary
- Junior Attendance Area

